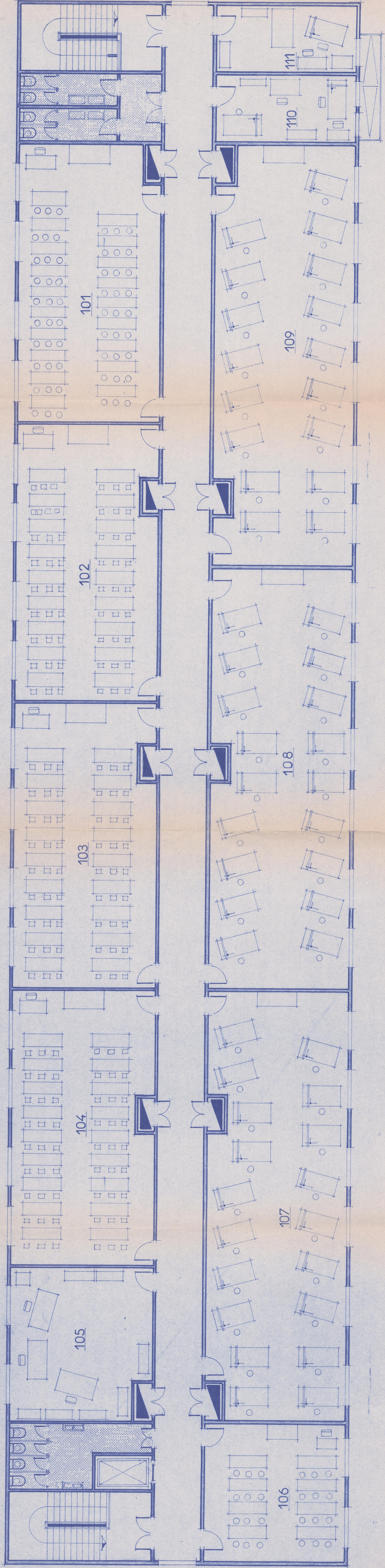


79.80

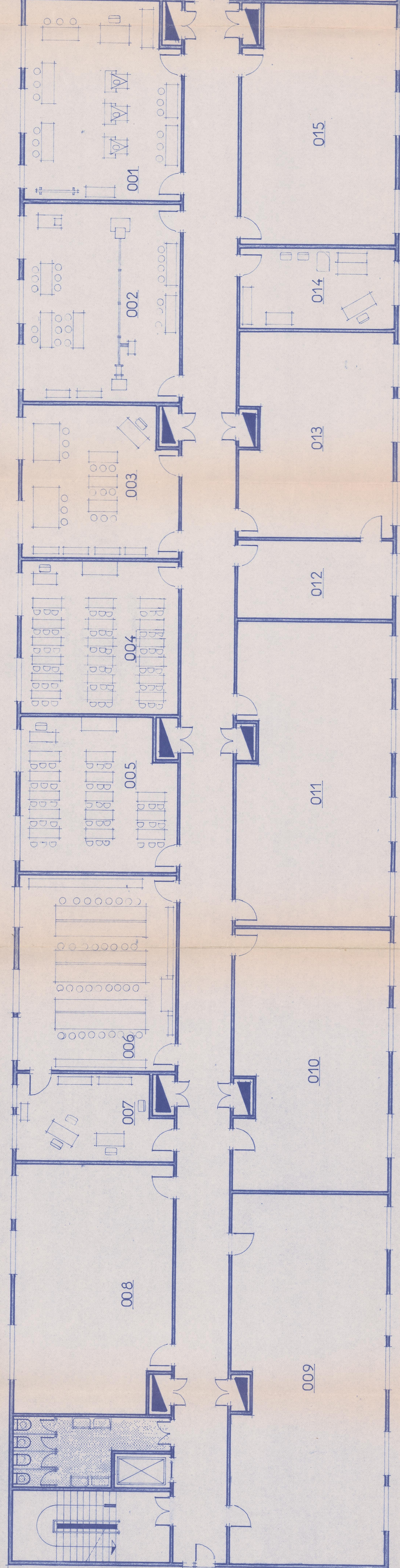
57.60

ETAGE



43.20

REZ de CHAUSSEE



17.52

PARKING

IMPLANTATION

ETAGE

REZ de CHAUSSEE



INSTITUT UNIVERSITAIRE  
de TECHNOLOGIE  
GENIE CIVIL

DESINE PAR	DATE	OBSERVATIONS
VERIFIE PAR		
MODIFIE LE:		REF.
MODIFIE LE:		Plan
MODIFIE LE:		n°